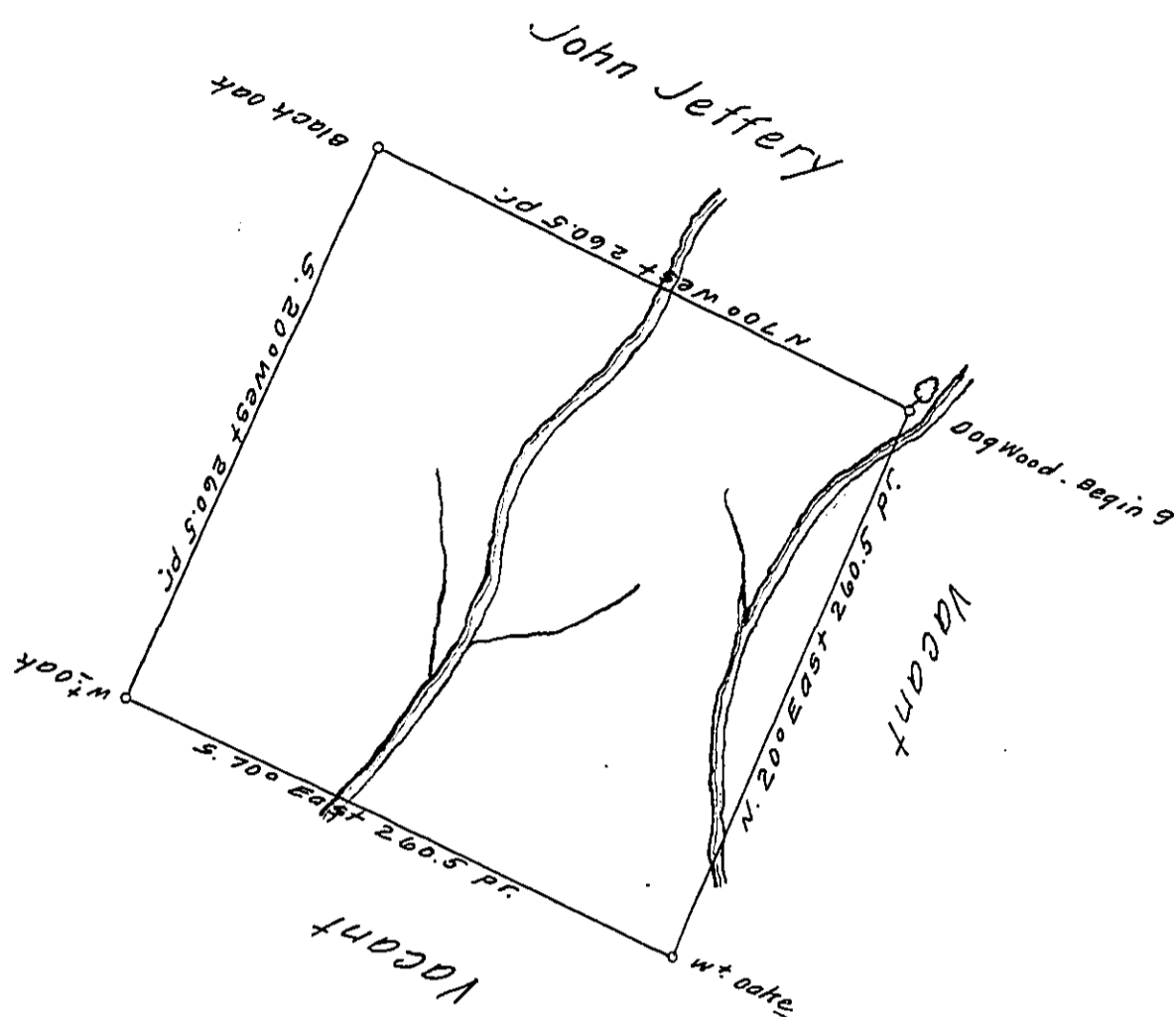


FORM NO. 1.

No. 1.



The Above is a Draught of a Survey made Decem^r. 6th 1784 in Pursu^ent of a Warrent Granted to James Jaffray Dated Sep^r. 13th 1784. Situated on the waters of the South fork of ten Mile Creek. by Estimation About 60 P^r from of the mouth of the Run in Washington County. Called Plum Run. Containing four hundred Acres with the Allow^e of 6 P^r Cent for Roads.

David Redick D.S.

John Lukens Esq^r Sur^r Gen^l

IN TESTIMONY that the above is a copy of the original remaining on file in the Department of Internal Affairs of Pennsylvania, made conformably to an Act of Assembly approved the 16th day of February, 1833, I have hereunto set my Hand and caused the Seal of said Department to be affixed at Harrisburg, this twenty ninth day of November 1911.

Nenny Houck
Secretary of Internal Affairs.